



Mini-Com® 12-Port Modular Faceplate Patch Panels

- Release snap feature on faceplate allows simple front access for termination and accessibility to installed modules
- Mount directly onto wall
- Accept Mini-Com® Modules for UTP, fiber optic, and audio/video, which snap in and out for easy moves, adds, and changes
- Modular design for easy cabling revisions



CWPP12WBL



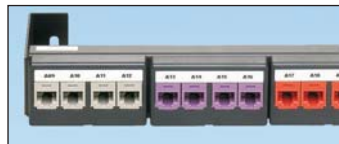
CPP12WBL



WB89D

Part Number	Part Description	Std. Pkg. Qty.	Std. Ctn. Qty.
CWPP12WBL	12-port patch panel supplied with three factory installed CFFP4 snap-in faceplates with integrated wall mount bracket.	1	10
CPP12WBL	12-port patch panel supplied with three factory installed CFFP4 snap-in faceplates. Mounts to standard 89D bracket (WB89D).	1	10
WB89D	Wall mount bracket accepts 12-port snap-in faceplate patch panel. Can also be used to mount industry standard 66 blocks.	1	10

Component Labels for Mini-Com® 12-Port Modular Faceplate Patch Panels



Suggested Label Solutions for TIA/EIA-606-A Compliance

Patch Panel Part Number	Laser/Ink Jet Desktop Printer Label	TDP43ME Thermal Transfer Desktop Printer Label	PanTher™ LS8E Hand-Held Printer Label	Cougar™ LS9 Hand-Held Printer Label
CWPP12WBL CPP12WBL	C261X030FJJ	C261X030YPT	C261X030FJC	T031X000FJC-BK

For complete labeling solutions and product information, reference charts on pages O.1 – O.22 of SA-NCCB51.

Mouser Electronics

Authorized Distributor

Click to View Pricing, Inventory, Delivery & Lifecycle Information:

Panduit:

[CWPP12WBL](#) [WB89D](#)